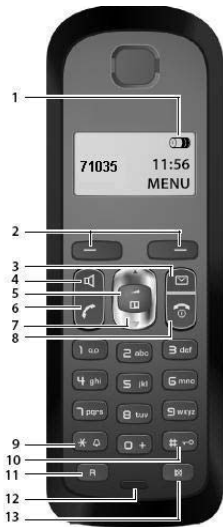


MITEL

5505 Guest IP Phone (Cordless)



- 1 Battery Status
- 2 Display Keys
- 3 Message Key
- 4 Handsfree Key
- 5 Volume Control Key
- 6 Talk Key
- 7 Phonebook Key
- 8 End Call/ On/Off Key
- 9 Ringer On/Off
- 10 Key Pad Lock On/Off
- 11 Not Used
- 12 Microphone
- 13 Microphone off key

Turning the Handset On/Off

- Press and hold

Making a Call

- Press or and dial the number OR
- Dial the number and press or

NOTE: If the quality of the voice degrades during a call, you are walking out range. The call will drop out of range.

Answering a Call

- Press
- OR
- Press for handsfree.

Ending a Call

- Press to end a call.

Turn the Ringer Off

- Press and hold the * key

Muting Your Call

You can mute your handset during a call so your caller no longer hears you.

- Press the Mute key
- Press the Mute key again to unmute the call.

Using the Phonebook

Certain numbers are stored in the Phonebook, such as room service, front desk, and so forth.

1. Press the Phonebook key.
2. Scroll up or down until you reach your selection.
3. Press to call the person.

Using the Last Number Redial List

The last 10 numbers dialed are stored.

1. Press and hold
2. Scroll up or down until you reach your selection.
3. Press to dial the number.

Using Speed Dial Keys

Dial keys 1-5 contain speed keys to the front desk, housekeeping and so forth. They match the 5 speed dial keys on the base phone.

- Press and hold one of keys 1-5 on the dial pad.

The number is dialed automatically.

Joining a Call on the Base Station

- Press
- You can join the conversation. Only one handset can join.

Retrieving Messages

- Press the Message key

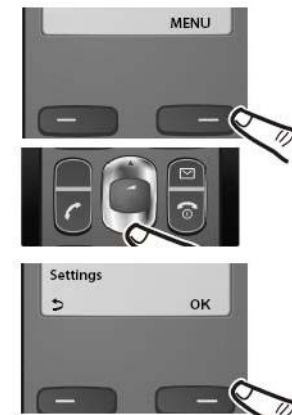
Changing the Handset Volume

- While on a call, press the Volume Control key up.
- Then press up or down to adjust the volume.

Using the Menu

Use the **Menu** key to set the alarm or adjust the settings of the handset.






- Press the **Menu** key (see below).
- Scroll down until you reach your selection.
- Press OK. Continue to scroll to the desired setting, and enter the needed information.



MITEL

5505 Guest Room IP Phone



- 1 PC Port
  Mute Key
- 2 Ringer Volume Slider
  Messages Key
- 3 Speed Dial Keys to Front Desk, Housekeeping, etc.
  Speakerphone Key
- 4 Dial Pad
  End Call Key
- 5 Mute, Message, Speaker, End Call, Line in Use keys
  Line In Use Indicator

- 6 Volume Up/Down Key
- 7 Handset Locator

Making an External Call

- Press  and dial the number.

OR

- Dial the number.

The speakerphone lights during your call 

Answering a Call

The base unit and all handsets will ring.

- Press 

Ending a Call

- Press  to end the call.

Muting a Call

- Press 

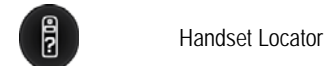
The caller no longer can hear you. The mute key is lit while muted.

- Press  to unmute the call.


Using Speed Dial Keys

- Press one of the five key above the dial pad to reach the front desk, housekeeping, etc.

Retrieving Messages



Handset Locator

- Press 
- Enter your password.

Joining a Call on a Handset

When a handset is on a call, the line in use button is lit.

- Press 

You can join in on the conversation.

Adjusting the Speaker Volume


- Press the volume button repeatedly to raise or lower the speaker phone volume.



Adjusting Ringer Volume

- Slide the switch on the side of the phone to low, medium or high.

Locating Handsets

- Press  in the handset pocket.

All handsets will ring.

- Press  on the handset to stop the ringing.

- Press  again to stop the